

Technical Information



Armipent series 2

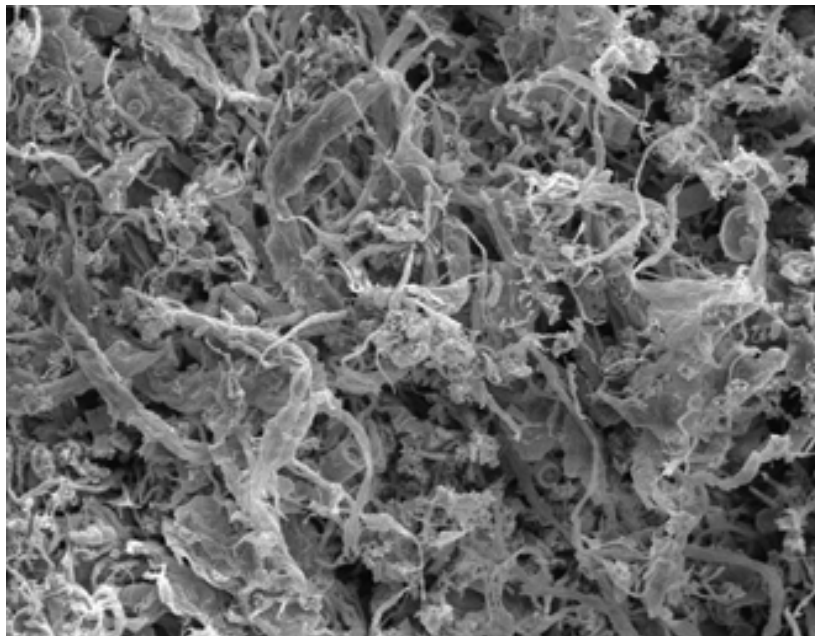
FINMA

Fibrous reinforcement-/viscosity adjustment agents

Description

- Armipent is a reinforcement- and viscosity adjustment agent
- Base: fibrillated polyolefin fibers and silica
- Application areas: floor/leveling, mortars, putties, flexible sealants, tile and surface adhesives, filling compounds, coatings

SiO ₂ in [%]	fiberlength in [µm]	100 µm	400 µm	1500 µm
45		Armipent 532	Armipent 542	Armipent 5152



Incorporation

- Easy incorporation
- homogenous fiber distribution without fiber aggregates
- Low dust generation
- No labeling required, due to no Cristobalit content

Application and drying

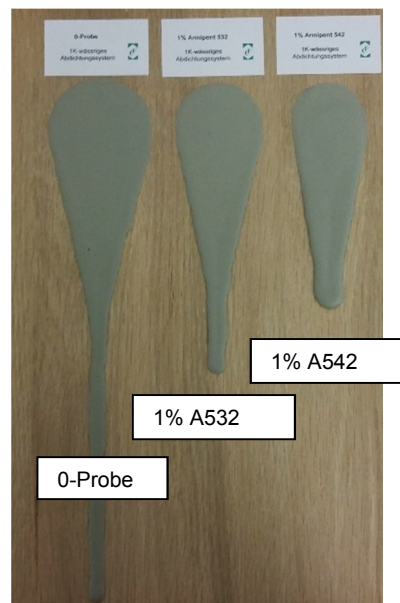
- Higher film-thickness in one applicati
- Improved crack bridging
- Reduced shrinkage/cracking
- Reduced drainage on vertical surfaces



Shrinkage cracking at high layer thickness: 0-sample



Shrinkage cracking at high layer thickness: 0,75% Armipent 542

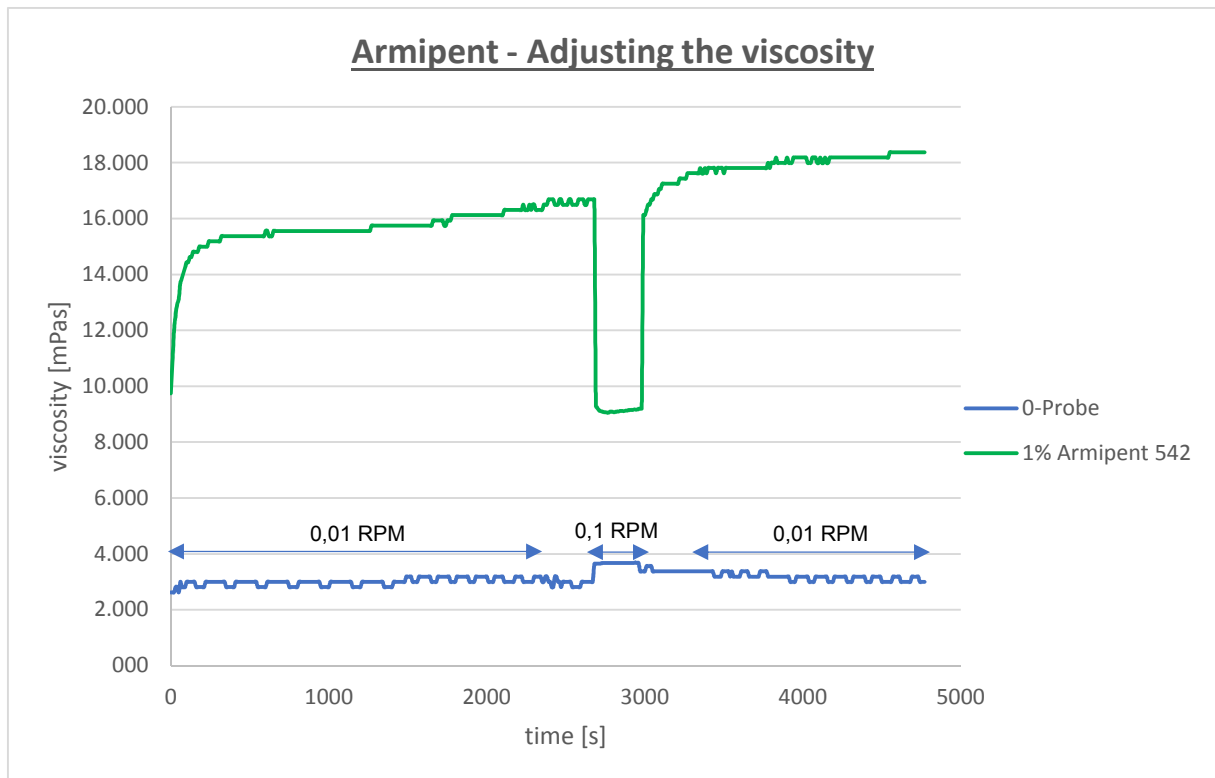


Rheology

Rheology

- Adjustment of application rheology
- High run-off stability:
 - Reduced sagging on vertical surfaces and ceilings (fillers);
 - Reduced slipping on vertical surfaces (tiles)

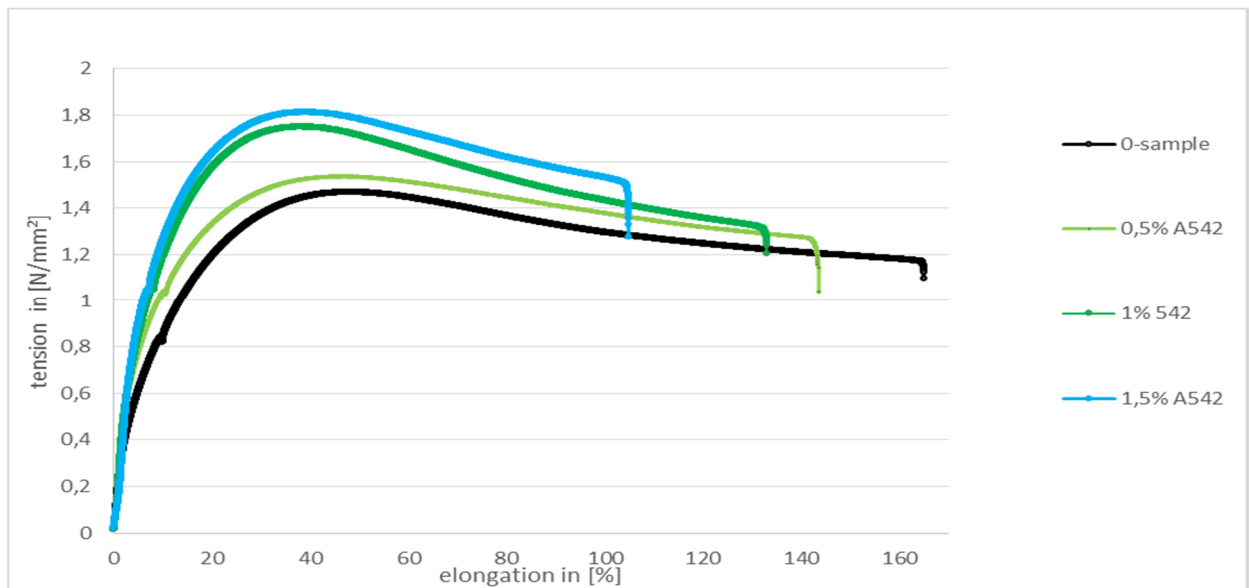
Example 1: Increase of structural viscosity in an water-based 1C Sealant
(Brookfield – shear force at 0,01RPM – 0,1 RPM)



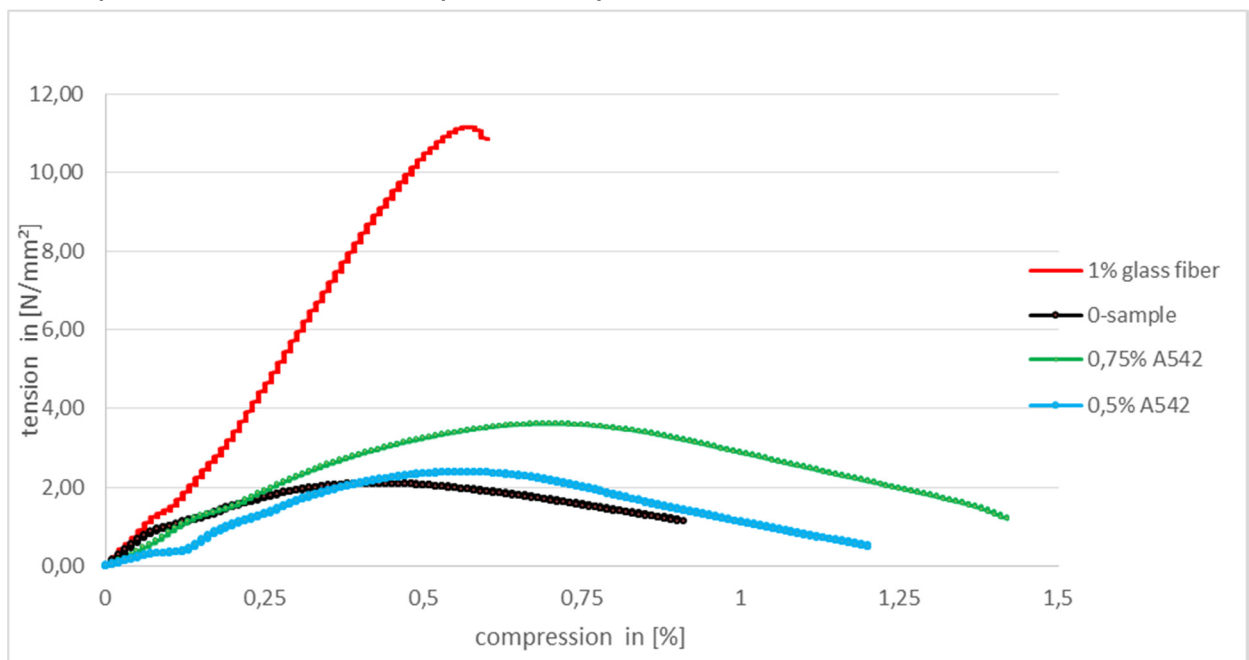
Mechanical Stability

- Higher bonding strength
- Increased tensile and compressive strength
- Increase of pressure bonding strength

Example 2: Increase of tensile strength in a flexible 1 C Sealant



Example 3: Increased compressibility of a cementitious floor filler



More technical Information

More detailed technical information about Armipent is available on request for the following systems:

- Water-based 1K/2K sealing systems
- Gypsum filling compounds
- Dispersion tile adhesives
- Cementitious floor leveling compounds
- Epoxy resin systems
- Polyurethane systems
- Roof coatings
- Dispersion acrylate fillers

Contact

- Customer-specific requirements need individual solutions
- We can offer support and advice for the start of your development work.
- Do you need more information?
The FINMA-Team is looking forward to your contact.

FINMA GmbH

Theodor-Heuss-Straße 5
D - 61191 Rosbach
Tel.: +49-6003-9193-0
Fax: +49-6003-9193-29
info@finma.de
www.finma.de



This datasheet should advise technically. It is not binding and does not claim to be complete.

The above data do not represent a characteristic warranty. The customer is not freed by this datasheet from his obligation to the examination on suitability for the intended purposes and procedures. Same applies to the inspection of incoming goods at the customer.

created 2018-10-02

replaces sheet from 2017-02-08